



SJ46/51 AJ

ARTICULATING BOOMS

STANDARD FEATURES

- EASYDRIVE™ Direction sensing drive and steer controls
- SKYRISER™ True vertical rise
- AXLDRIVE™ Axle-based 4WD system
- Operator controlled locking rear differential and limited slip front differential
- Oscillating steer axle
- Drivable at full height
- 45% Gradeability
- Wet disc SAHR brakes (rear axle)
- Relay based control system with SKYCODED™ colour coded and numbered wiring
- Deutz D2011L03i diesel engine
- ECOSTART anti-engine idle
- Swing out engine tray
- Swing up cowlings for easy access
- Lockable power disconnect switch
- 7.5 kW Generator (Includes hydraulic oil cooler)
- Flashing light
- Proportional controls
- 0.76 x 1.83 m Platform
- Bolt-in platform railing system
- Lanyard attachment points
- Dual-entry sliding mid rails
- Secondary Guarding Electrical (SGE)
- Overload sensing system
- Wiring for AC outlet on platform
- Tilt alarm (5.0° x 5.0°) with drive and lift cut-out
- Single point emergency lowering
- Hourmeter
- Operator horn
- All motion audible alarm
- 355° Non-continuous turret rotation
- Tie down / lifting lugs
- 12 x 16.5 Grip lug foam-filled non-marking tyres

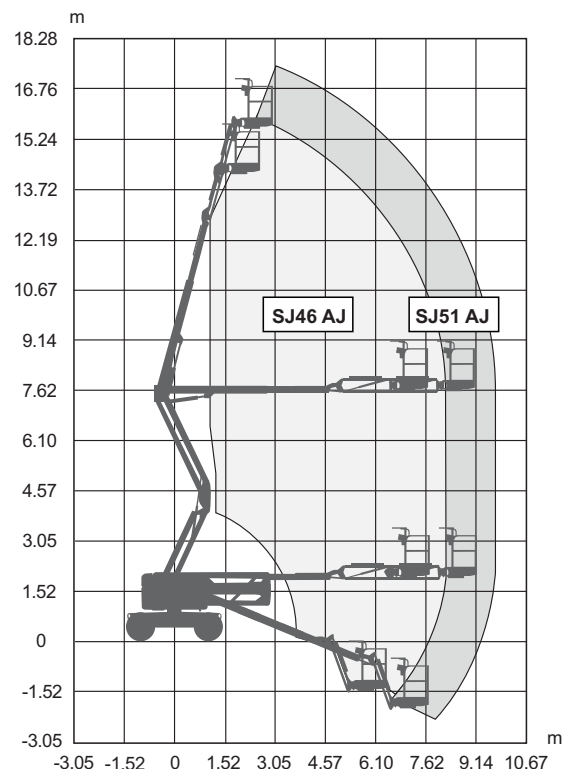
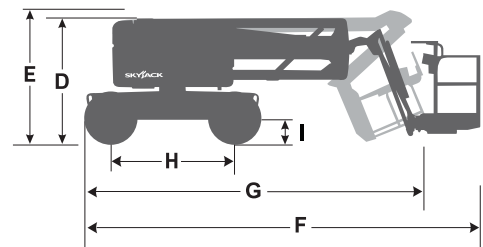
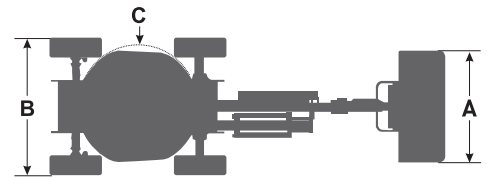
OPTIONS

- Glazier kit
- Pipe rack
- Tool caddy
- 0.76 x 1.52 m Platform
- Side spring hinged entry gate
- Half-height mesh platform (either size)
- Diesel scrubber
- Bio oil
- Control box cover
- ELEVATE telematics

† Standard lead times may be increased when optional equipment is added, consult factory.
‡ Capacities and machine weights may differ when options are added.

SJ46/51 AJ ARTICULATING BOOMS

| Dimensions | SJ46 AJ | SJ51 AJ |
|--------------------------------------|----------------------------------|----------------------------------|
| Work Height | 16.10 m | 17.55 m |
| Platform Height | 14.10 m | 15.55 m |
| Horizontal Reach | 7.54 m | 9.03 m |
| Up and Over Height | 7.45 m | 7.45 m |
| A Platform Size | 0.76 x 1.83 m | 0.76 x 1.83 m |
| B Stowed Width | 2.29 m | 2.29 m |
| C Tailswing | 0 | 0 |
| D Stowed Height | 2.06 m | 2.06 m |
| E Transportation Height | 2.16 m | 2.27 m |
| F Stowed Length | 6.35 m | 7.10 m |
| G Transportation Length | 5.97 m | 6.72 m |
| H Wheelbase | 2.03 m | 2.03 m |
| I Ground Clearance | 0.39 m | 0.39 m |
| Specifications | SJ46 AJ | SJ51 AJ |
| Rotation | 355° NC | 355° NC |
| Platform Rotation | 170° | 170° |
| Jib Length | 1.40 m | 1.40 m |
| Jib Range +/- | +70° / -75° | +70° / -75° |
| Weight | 6,400 kg | 7,050 kg |
| Gradeability | 45% | 45% |
| Turning Radius (Inside) | 2.49 m | 2.49 m |
| Turning Radius (Outside) | 4.34 m | 4.34 m |
| Axle Oscillation | 12.70 cm | 12.70 cm |
| Drive Speed (High speed) | 7.7 km/h | 7.7 km/h |
| Capacity | 227 kg | 227 kg |
| Local Floor Load (With Rated Load) | 8.73 kg/sq cm | 9.59 kg/sq cm |
| Overall Floor Load (With Rated Load) | 1,030 kg/sq m | 1,122 kg/sq m |
| Maximum Wind Rating | 12.5 m/s | 12.5 m/s |
| Personnel Rating at Max Wind Speed | 2 | 2 |
| Tyre Type | Foam-Filled, NM | Foam-Filled, NM |
| Tyre Size | 12 x 16.5 | 12 x 16.5 |
| Diesel Engine | Deutz D2011L03i 48 HP (36 KW) | Deutz D2011L03i 48 HP (36 KW) |
| Fuel Tank Capacity | 64 L | 64 L |
| Hydraulic Reservoir | 91 L | 91 L |



SJ46/51 AJ WORKING ENVELOPE

Skyjack Australia Pty Ltd
Unit 1, 35 Honeycomb Drive
Eastern Creek
NSW 2766
Australia
Phone +61 (0) 2 9854 0700
Fax +61 (0) 2 9854 0777
Email: jcranmer@skyjack.com

www.skyjack.com

SKYJACK
simply reliable

This brochure is for illustrative purpose only and based on the latest information at the time of printing. Skyjack Inc. reserves the right to make changes at any time, without notice, to specifications, standard and optional equipment. Consult the Operating Maintenance and Parts Manuals for proper procedures. AS marked platforms are in conformance to Standard AS/NZS 1418.10:2011.